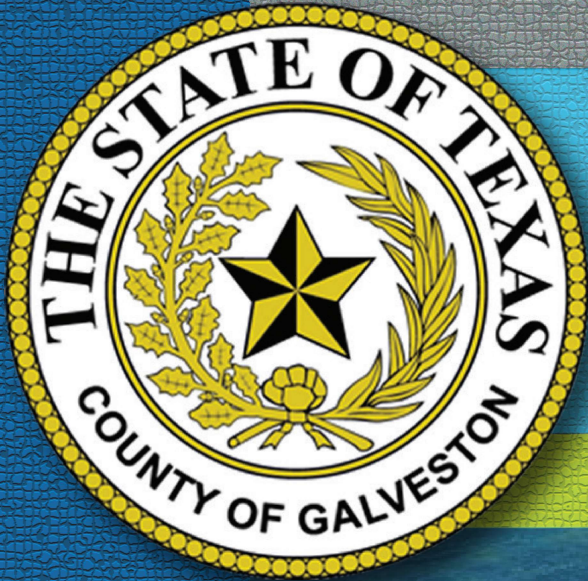


GALVESTON COUNTY

EMERGENCY MANAGEMENT



EMERGENCY AND DISASTER GUIDE



Judge Mark Henry
Galveston County
Emergency Management Director

GALVESTON COUNTY
OFFICE OF EMERGENCY MANAGEMENT
1353 FM 646 WEST, DICKINSON, TEXAS 77539

The mission of the Galveston County Office of Emergency Management is to save lives, protect critical infrastructure, preserve property and reduce the impact of all-hazard incidents and disasters through planning, preparedness, response, and recovery activities. We proactively build a more resilient community through collaborative relationships with government agencies, emergency services, private sector partners, faith-based organizations, volunteer agencies and the citizens of Galveston County.

281-309-5002 or 888-384-2000

FOR LIFE THREATENING EMERGENCIES CALL 911



GALVESTON COUNTY COMMISSIONERS COURT



PRECINCT 1 - DARRELL APFFEL
2516 TEXAS AVE. - 135
TEXAS CITY 77590
409-770-5474



PRECINCT 2 - JOE GIUSTI
11730 HIGHWAY 6
SANTA FE 77510
409-770-5475



PRECINCT 3 - STEPHEN HOLMES
9850 A EMMETT F LOWRY A100
TEXAS CITY 77591
409-770-5806



PRECINCT 4 - KEN CLARK
174 CALDER ROAD - 112
LEAGUE CITY 77573
281-316-8744

HURRICANE SEASON

9 FEET STORM SURGE 6 FEET 3 FEET



Storm surge is life-threatening coastal flooding that accounts for about half of all deaths associated with tropical storms and hurricanes in the US. Forecasts are expressed as feet of water above ground.

**Stay prepared
for tropical
weather
from May
through
November**



INLAND FLOODING



It doesn't take a major hurricane to cause major impacts to an area. Even relatively weak tropical systems can produce vast amounts of rainfall well inland from the coast, leading to devastating flooding.

1 **CATEGORY 1**
74 - 95 MPH
Some damage to homes and trees. Power outages could last days.

2 **CATEGORY 2**
96 - 110 MPH
Extensive damage to homes and trees. Power outages could last several days.

3 **CATEGORY 3**
111 - 129 MPH
Devastating damage. Roads may be blocked by trees. Extended power outages.

Hurricane Wind Damage

4 **CATEGORY 4**
130 - 156 MPH
Catastrophic damage. Power outages could last weeks or months.

5 **CATEGORY 5**
157 MPH OR MORE
Seriously catastrophic damage. Area may be uninhabitable for months.

RECOVERY

BEGINS BEFORE A STORM



THE PROCESS

INSURANCE

Begin your disaster recovery now with adequate insurance for your home and possessions. Separate flood insurance is available, even if you are not in a flood zone. Separate windstorm insurance covers wind and hail damage. Document all repairs and do a full inventory of your possessions prior to hurricane season. Notify your insurance company immediately if you experience any covered losses and begin the claims process.

FEMA

In the event of a Federally Declared Disaster, you may be eligible for assistance from the Federal Emergency Management Agency (FEMA). If your home is damaged and not safe to live in, you may be eligible for temporary housing assistance. If you are a homeowner, you may be eligible for money to help pay for the cost of repairs and lost or damaged possessions not covered by insurance. The maximum FEMA assistance per household is currently \$34,000, with the average grant being around \$4000.

SBA

The Small Business Association (SBA) offers very low interest disaster loans to assist homeowners and small businesses in their recovery. To be considered for a loan or certain types of FEMA grant assistance, such as transportation, personal property, and moving and storage, you must complete and return a SBA application.

FEMA Disaster Assistance: (800) 621-3362

SBA Disaster Customer Service: (800) 659-2955

Flood Insurance Program Referral: (888) 379-9531

Texas Windstorm Insurance Association: (800) 788-8247



PANDEMIC PREPAREDNESS

**What can you do to protect
your family in disasters?**

***Using CDC guidelines, add items to your emergency kit to protect from viruses during a disaster.**

***Pack a thermometer and medications that might be needed if a family member becomes ill.**

***Consult with your doctor to see what vaccines are recommended to protect you during disasters.**

***Build alternative plans to use if your host or a family member is sick during an evacuation or sheltering.**

For more information visit: www.GCOEM.org



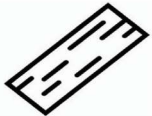
PROTECT YOUR HOME BEFORE A STORM



Assess your insurance needs each year, including flood insurance for your home.



Trim your trees and shrubs; removing any dead limbs that might break off in a storm.



Store tools and materials to use to protect your windows from wind blown objects.



Move your vehicles into the garage or other secure location before threatening weather.



Bring outdoor items inside to keep them from damaging your home in strong winds.



Lock all of the doors and windows on your property, including the garage door.

MAKE A PLAN



Fill out a Family Emergency Communications Plan.

Create a paper copy of important contact information for family, friends, schools, doctors and work. Keep a copy in your bag.



Fill out a Family Evacuation Plan.

Learn your evacuation Zip Zone. Find the supported evacuation routes from your area. Supported routes may offer your family additional resources as you travel to your safe evacuation area. If you need assistance with transportation, have access, functional or medical needs or are a person with language barriers, contact 2-1-1 and register with STEAR. Develop a plan to meet your individual and family needs for all hazards.

Hurricane Planning Information:

<https://www.ready.gov/plan>

Hurricane Evacuation Zip Zone Map:

<http://www.h-gac.com/hurricane-evacuation-planning/default.aspx>

CERT

The Galveston County CERT (Community Emergency Response Team) provides free training to help prepare you to respond to emergencies in your own neighborhood. CERT facilitates hands-on instruction throughout the year to prepare ordinary citizens to support their neighbors in times of disaster.

For more information go to:

<https://galvestontxcert.samariteam.com/>





BUILD A KIT

Fill your disaster kit with items that meet the needs of those living in your home, including access, functional and medical needs.

EVACUATION ITEMS

- Road maps
- Full fuel tank
- Cash and credit cards
- Car repair items
- Tent, blanket, pillows
- Clothes, sturdy shoes
- Rain gear and towels
- Books, games and toys

FOOD AND WATER

- 7 day supply of food
- Plastic plates and utensils
- 1 gallon of water per person
- Manual can opener
- Baby food and formula

PERSONAL ITEMS

- Prescriptions in bottles
- Other medications
- Cooler for meds if needed
- Hand sanitizer, masks, wipes
- Toilet paper, paper towels
- Dental care products
- Hearing and vision aids
- Hygiene and comfort items
- Sunscreen and bug spray
- Diapers and wipers
- Medical and mobility devices

TOOLS

- Radio with batteries
- Extra phone charger
- Flashlight and batteries
- Pocket knife
- Whistle and mirror
- Plastic tarp, duct tape
- Saw or hatchet
- Trash bags
- Work gloves and goggles
- Cleaning supplies

FIRST AID KIT

- CAT or Soft-T tourniquets
- Band-aids and gauze
- Antibiotic cream
- Benadryl and pain reliever
- Thermometer
- Medical gloves
- Elastic wrap

DOCUMENTS

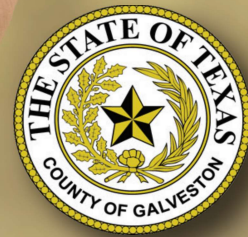
- ID, birth record and Social Security card
- Insurance policies
- Deeds, lease and titles
- Home inventory and photos
- Computer back-up
- Utility bills and extra keys
- Family photos

STEAR STATE OF TEXAS EMERGENCY ASSISTANCE REGISTRY

REGISTER **EVERY YEAR** IF YOU NEED ASSISTANCE EVACUATING IN A DISASTER OR EMERGENCY.

Who should register?

- People with disabilities or limited mobility
- People who need medical assistance
- People with functional and access needs
- People who require transportation
- People with communication barriers



CALL 2-1-1 OR GO TO:
<https://tdem.texas.gov/stear/>

ARE YOU CONNECTED?

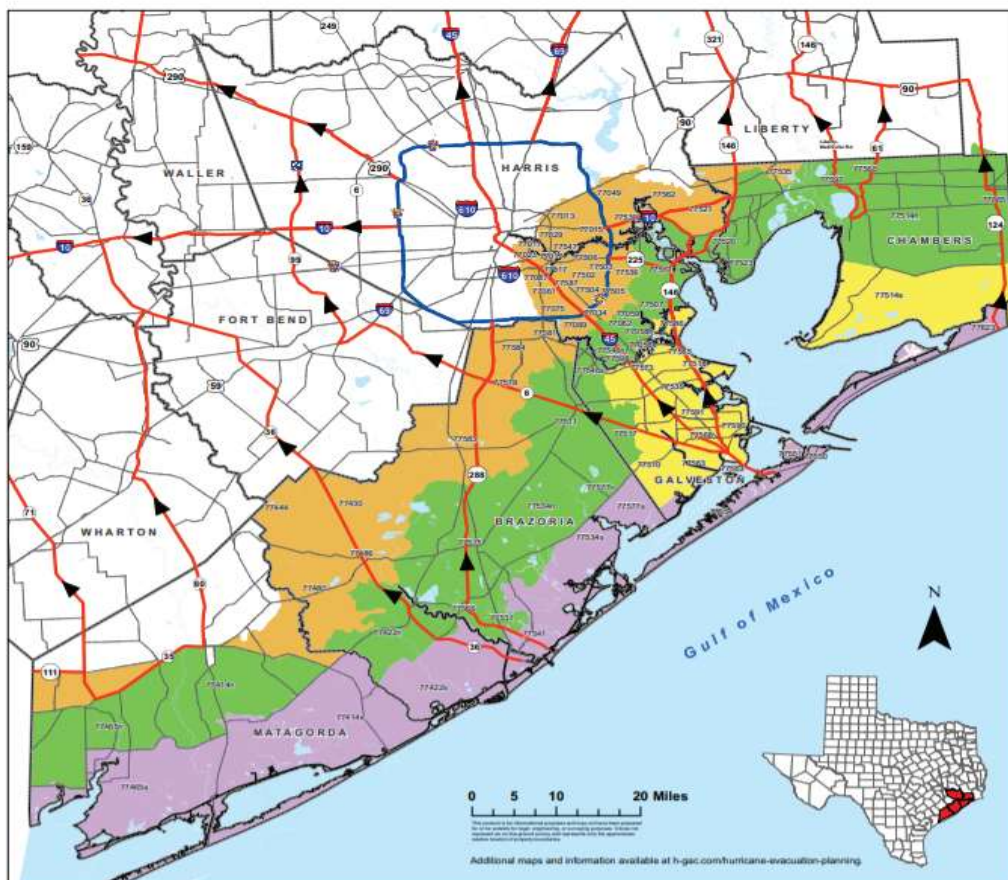
Receive emergency messages by signing up for Blackboard Connect. Choose how you would like to receive important information by going to: galvestoncountytx.bbcportal.com



EVACUATION

VOLUNTARY evacuations are issued when forecasted conditions indicate that it is not safe for you to remain in the area. These are issued by your Mayor or the County Judge.

MANDATORY evacuations are issued when forecasted conditions indicate that it is not safe for you to remain in the area. It is also an indication that emergency services may not be available until conditions improve. These are issued by your Mayor or the County Judge.



Brazoria, Chambers, Galveston, Harris, and Matagorda Hurricane Evacuation Zip-Zones Coastal, A, B, C

ZIP ZONE COASTAL				
77414s	77422s	77465s	77534s	77541
77550	77561	77564	77563	77577s
77623				
ZIP ZONE A				
77058n	77510	77514s	77518	77530
77563	77565	77568	77573	77586
77590	77591			
ZIP ZONE B				
77058n	77059	77062	77414n	77422n
77469n	77507	77511	77514n	77515
77517	77520	77523	77531	77534n
77546n	77546s	77560	77566	77571
77577n	77597	77598	77665	
ZIP ZONE C				
77011	77012	77013	77015	77017
77023	77029	77034	77049	77061
77075	77087	77089	77430	77444
77480	77486	77502	77503	77504
77505	77506	77521	77530	77535
77536	77547	77562	77578	77581
77583	77584	77587		

Some zip codes are split into north (n) and south (s) for evacuation purposes.

Route Designation

- Evacuation Corridors
- Evacuation Connections
- Other Roads
- County Boundary



0 5 10 20 Miles

Additional maps and information available at h-gcc.com/hurricane-evacuation-planning

WHAT TO EXPECT AT A SHELTER

If you must evacuate and you do not have a place to stay, you may end up in a shelter until it is safe for you to return home. At most shelters you will find showers, rest room facilities and cots. Many offer meals for those who have evacuated, but may not



be able to accommodate special dietary requests. Be sure that you take any special items your family might need like: diapers, formula, hand sanitizer, medications, medical and mobility devices, snacks, games, books, face masks and chargers.

Blankets are usually offered at the shelter but you might feel more comfortable with pillows and bedding from home.

WHAT CAN I DONATE AND WHERE?

Community support after disasters is generous, but can be overwhelming if it is not delivered in a way that the impacted neighborhoods can use it. Many cities find themselves with mountains of clothes and household goods without the capacity to sort and deliver these items. If you would like to help, consider a cash donation to local charities working in your area or if you can donate your time and labor, consider looking at the local non-profits below that provide disaster relief and response to Galveston County residents.



4B Disaster Response Network

www.4BResponse.Org

Galveston Community Emergency Response Team

galvestontxcert.samariteam.com

TEXSAR - Texas Search and Rescue

www.TEXSAR.org

Lighthouse Charities

www.lighthousecharityteam.com

Medical Reserve Corps

www.GCHD.org

Team Rubicon

www.teamrubiconusa.org

Use generators outside and away from buildings. Exhaust fumes are deadly.



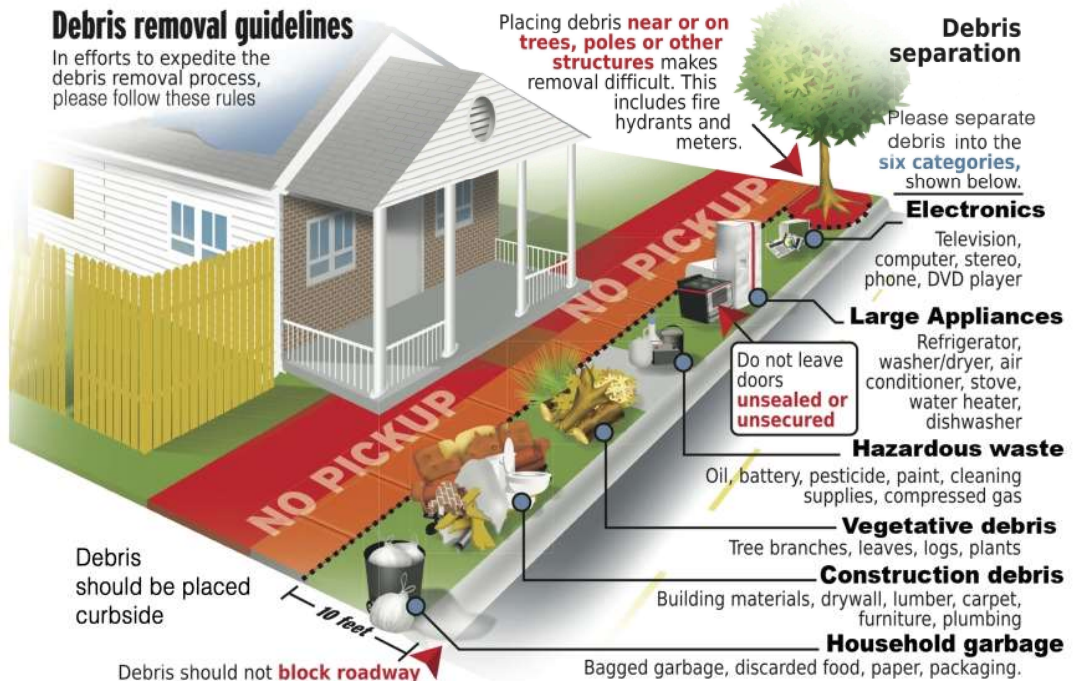
COMING HOME

Stay safe when you return from a disaster. Make sure utilities are turned off before entering your home. Wear long pants, sturdy shoes and a N-95 mask to protect you from debris and any mold that may be present. Watch for misplaced snakes, insects and animals hiding inside.



Debris removal guidelines

In efforts to expedite the debris removal process, please follow these rules



FLOODS

THE COST OF FLOOD INSURANCE IS A DROP IN THE BUCKET COMPARED TO THE COST OF FLOOD DAMAGE



FLOOD WATER RESCUES

- Heed weather warnings and follow directions.
- If water enters your home, shut off the main breaker for electricity as well as the gas.
- Go to the highest level of your home. **DO NOT ENTER ATTIC SPACES.** Climb on the roof only if absolutely necessary.
- If a rescue boat is floating down your street, get in it. Wear a life jacket if available.
- Take critical medications with you in a water proof bag when you evacuate.

Don't underestimate the power of water!



6 inches of fast-moving water can knock over and carry away an adult.

12 inches of fast-moving water can carry away a small car.

18-24 inches of fast-moving water can carry away most large SUVs, vans and trucks.





FIRE DANGER

OUTDOOR BURNING

Outdoor burning is prohibited in the State of Texas except under certain conditions. The Galveston County Health District provides an Outdoor Burning Rule checklist that can help verify if a proposed burn meets the stipulations of the exemptions. In the event that a Burn Ban has been issued for the County, all outdoor burning is restricted for public safety.



CARELESS BURNING CAN CAUSE WILDFIRE



HOW



CHECK THE WEATHER TO SEE IF CONDITIONS WILL BE SAFE TO BURN.



KEEP A WATER SUPPLY AND SHOVEL CLOSE.



NEVER LEAVE A FIRE UNATTENDED. IT'S AGAINST THE LAW AND YOU CAN BE HELD LIABLE FOR DAMAGES.

KEEP DEBRIS BURNS SMALL. THEY ARE EASIER TO CONTROL AND AT LESS RISK TO ESCAPE.



15'

CLEAR ALL FLAMMABLE MATERIAL AND ANY VEGETATION WITHIN AT LEAST 15' OF THE BURN.

WHAT



DO NOT BURN ANY GARBAGE.



DRIED CLIPPINGS, BUSHES, PLANTS, AND PRUNINGS FROM VEGETATION ON YOUR PROPERTY.

WHEN



DO NOT BURN IF IT IS WINDY, HOT, OR DRY.



ALWAYS CHECK FOR ANY FIRE RESTRICTIONS OR PERMITS IN THE AREA YOU INTEND TO BURN. IF YOU DON'T KNOW, CALL YOUR LOCAL FIRE AUTHORITY.

REPORT WILDFIRES CALL 9-1-1

ONE LESS SPARK ONE LESS WILDFIRE

FOR MORE INFORMATION: fs.usda.gov/main/r4/fire-aviation

FIREWORKS SAFETY TIPS

- Never re-light or pick up fireworks that fail
- Keep a hose or bucket of water nearby
- Light fireworks one at a time
- Make sure fireworks are legal in your area
- Sparklers should only be used with supervision
- Keep fireworks clear of dry vegetation and homes





USEFUL INFORMATION:

Sea Turtle Rescue: 1-866-TURTLE5

Sea Mammal Rescue: 1-800-9-MAMMAL

Water Quality: www.TexasBeachWatch.com

Tide Report: <https://tidesandcurrents.noaa.gov/map/>

SURF AND SUN SAFETY

RIP CURRENTS

Break the Grip of the Rip!



Rip currents are powerful currents of water moving away from shore. They can sweep even the strongest swimmer out to sea.

IF CAUGHT IN A RIP CURRENT

- ◆ Don't fight the current
- ◆ Swim out of the current, then to shore
- ◆ If you can't escape, float or tread water
- ◆ If you need help, call or wave for assistance

SAFETY

- ◆ Know how to swim
- ◆ Never swim alone
- ◆ If in doubt, don't go out

More information about rip currents can be found at the following web sites:

www.ripcurrents.noaa.gov
www.usla.org



HEAT EXHAUSTION

OR

HEAT STROKE

Faint or dizzy



Throbbing headache

Excessive sweating



No sweating



Cool, pale, clammy skin



Body temperature above 103°
Red, hot, dry skin

Nausea or vomiting



Nausea or vomiting

Rapid, weak pulse



Rapid, strong pulse

Muscle cramps



May lose consciousness

- Get to a cooler, air conditioned place
- Drink water if fully conscious
- Take a cool shower or use cold compresses

CALL 9-1-1

- Take immediate action to cool the person until help arrives

WHEN YOU HEAR IT DO IT



LOCK DOWN

Lock doors - Get out of sight
Turn off lights - Stay silent
Prepare to evade or defend



LOCK OUT

Go inside - Lock doors
Business as usual
Pay attention to surroundings
Account for occupants



EVACUATE

Bring your phone - Leave stuff
Leave your stuff
Follow instructions
Account for occupants

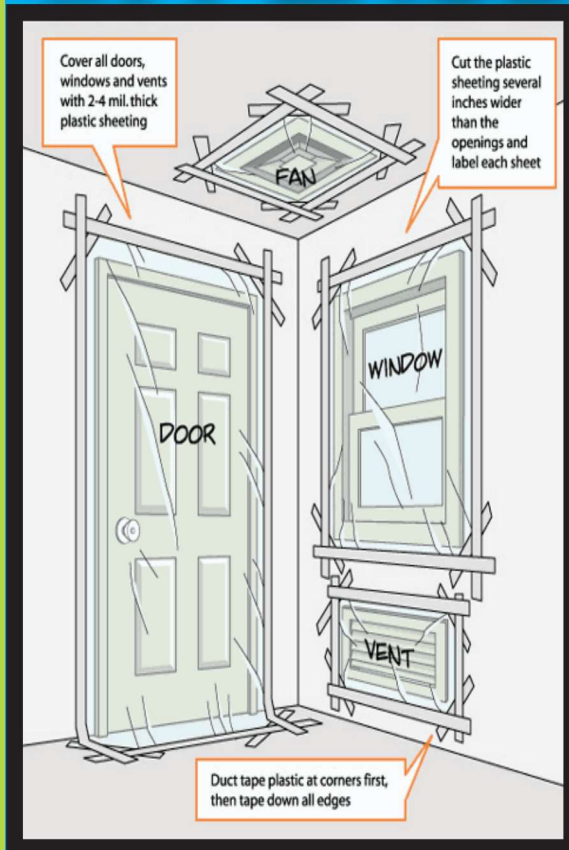


SHELTER

Follow instructions
Tornado - Go to inside lower room
HAZMAT - Seal the room



SHELTER IN PLACE



Know what's below.
Call before you dig.

CALL 8-1-1
BEFORE
DIGGING
TO AVOID
PIPELINES

TORNADOES AND ROAD SAFETY

WHAT TO DO

The best option is to get off the road and into a designated shelter or a safe building.

The next best option is a small, windowless room or hallway on the lowest floor of a sturdy building.



WHAT NOT TO DO

Do not seek refuge in a vehicle, outside or under an overpass. A highway overpass does not provide safety from a tornado.

DO NOT seek shelter under an overpass or a tree. This puts you at greater risk of being killed or seriously injured by flying debris from the powerful tornadic winds.



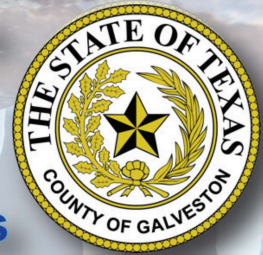
Prepare for Cold Weather

PEOPLE - Check on elderly neighbors and those with access and functional needs

PETS - Bring your pets inside

PIPES - Wrap or insulate water pipes and turn off water in vacation properties

PLANTS - Cover plants during freeze warnings



Fog may be a hazard to motorists

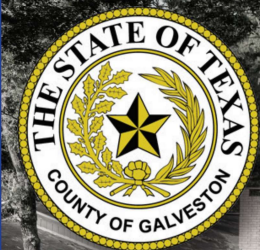
Dense fog makes it difficult to see what's ahead

Turn on your low-beam lights

Drive slowly and with caution

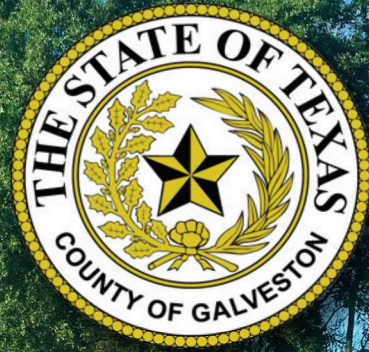


weather.gov/fog



STAY INFORMED

JURISDICTION	MAIN NUMBER	NON-EMERGENCY	WEBSITE
Bayou Vista	409-935-8348	409-935-0449	http://bayouvista.us/
Clear Lake Shores	281-334-2799	281-334-1034	https://www.clearlakeshores-tx.gov/
Dickinson	281-337-2489	281-337-4700	https://www.ci.dickinson.tx.us/
Friendswood	281-996-3200	281-996-3300	https://www.ci.friendswood.tx.us/
Galveston	409-797-3500	409-765-3702	https://www.galvestontx.gov/
Hitchcock	409-986-5591	409-986-5559	http://www.cityofhitchcock.org/
Jamaica Beach	409-737-1142	409-737-1142	http://www.ci.jamaicabeach.tx.us/
Kemah	281-334-1611	281-334-5414	https://www.kemah-tx.gov/
La Marque	409-938-9200	409-938-9269	https://www.cityoflamarque.org/
League City	281-554-1000	281-332-2566	https://www.leaguecity.com/
Santa Fe	409-925-6412	409-925-2000	https://www.ci.santa-fe.tx.us/
Texas City	409-948-3111	409-643-5720	http://www.texas-city-tx.org/
Tiki Island	409-935-1427	409-935-1427	http://www.villageoftikiisland.org/
Unincorporated Galveston County	409-762-8621	409-766-2322	http://www.galvestoncountytx.gov/



GALVESTON COUNTY EMERGENCY MANAGEMENT



County Judge Mark Henry
Emergency Management
Director

Galveston County Emergency Management 281-309-5002
Galveston County Sheriff Non-Emergency 409-766-2300
Galveston County Health District 409- 945-2540
Gulf Coast Center Crisis Hotline 866-729-3848
*****Call 911 for life threatening emergencies*****

WEBSITE: WWW.GCOEM.ORG



GalvestonCountyTX



GalvCountyOEM

